

User Manual

WiBee System

Ver 2.1



Contents

Product Description	3
Key Benefits.....	3
WiBee - Product Features	4
LEDs key:	5
Specifications:.....	5
Typical wiring connection to an Electronic Lock:.....	6
Typical wiring connection to a Gate:.....	6
System settings using the PalGate App	7
The PalGate App installation process	7
New device setup	8
Add a new user.....	8
Important Information for optimal operation:.....	8

Product Description

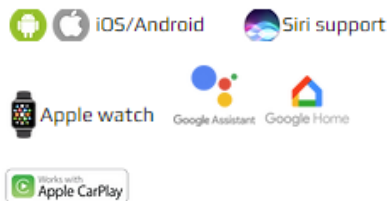
The WiBee System IoT units are WiFi, Bluetooth and Sub-GHz Remote Control Receiver – 433MHz system, for access and management control. Through on board relays, users can control the unit via either a dedicated application or an easy-to-use WEB portal. This device seamlessly integrates with electric gates, doors, lighting systems, or any other appliance that would benefit from remote control and management.

IMPORTANT: An annual subscription is required to use this product.

Key Benefits

- **Secure Remote Access** – Full control of the unit from anywhere, at any time while connected to WiFi.
- **Proximity-Based-Access** – “Nearby Only” feature restricts operation to users within physical range of the unit.
- **Smart Automatic opening** – Seamless gate activation upon arrival. (Requires PalGate App connection to the vehicle’s multimedia system via Bluetooth).
- **Compact Size** - The unit has a small footprint, measuring just 80X53 mm.
- **Dual management Platform** – Full system control via the intuitive PalGate App and user-friendly web portal. *
- **LED Status Indicator** – Four integrated LEDs provide clear feedback on power, connection status, and signal strength.
- **User Control**– Define multiple administrators and authorized users for tailored access permissions.
- **Real time Alerts** – Instant updates via email or push notification directly to the PalGate App or Email while the unit has an active WiFi connection.
- **Voice Assistant**– Hand-free operation compatible with Siri or Google Assistant.
- **Advanced Scheduling**– Ability to set timers, events, astronomic clocks and more. **
- **User Management** - Easily import and export data using Excel. *
- **Adjustable Relay Pulse** – Programmable pulse width.

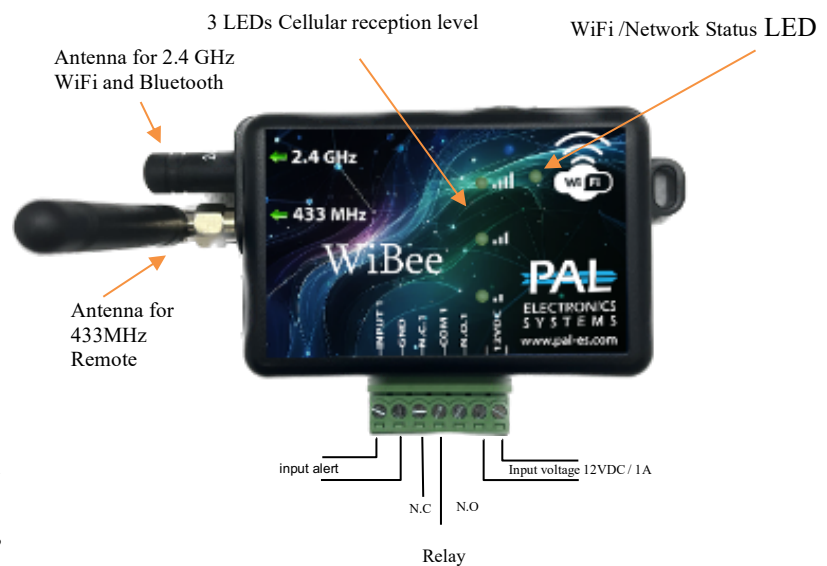
WiBee - Product Features



- Control with PalGate App IOS & Android
- Manage with a App or user-friendly WEB portal *
- The system supports an unlimited number of users. Each unit includes 5 PalGate App users by default, with an option to add more as needed *
- 1 output relays (N.O./N.C.)
- 1 input channels with real-time notifications to Email and push to PalGate App while the unit has an active WiFi connection
- Multiple opening methods: Proximity, App, Siri, Google Assistant, Remote Control & Wireless vehicle detector
- Allows customization of opening distance (Nearby only or unlimited distance)
- API integration available *
- Provides unlimited logs *
- User Access Restriction by Specific Days and Hours **
- Features timers and event scheduling **
- Equipped with a programmable astronomical clock **
- Capability to import and export data via Excel files *
- Adjustable relay pulse width *
- Compatible with 2.4G WiFi.
- Operates on an input voltage of 12VDC
- Compact dimensions: 53x80 mm
- Weight 83 gr
- P/N WB011-R

* Optional feature. Payment may apply

** For accurate time the unit must be connected to WiFi



LEDs key:

WiFi Network LED

Fast Flashing: System is booting

When the LED is steadily on, it indicates that the unit is on and ready to connect to Wi-Fi .

WiFi Signal Strength Indicator

LED #1 ON: Low signal

LED #1 and #2 ON: Good signal

LED #1, #2, and #3 ON: Very good signal

Specifications:

Supply Voltage Range: 12-24V DC

Average Standby current consumption: ~40mA

Relay Contact Current Rating: 1A, 30V AC/DC (Resistive)

Antenna: 50Ω SMA Antenna interface

Temperature Range: -20°C to +70°C (-4°F to +158°F).

Exterior Dimensions: 53mm x 80 mm (2.09 in. x 3.15 in).

Net Weight: 87 gr (3.07 ounces)

Frequency Bands:

IEEE 802.11b/g/n (2.4 GHz WiFi)

and Bluetooth® 5 (LE)

Typical wiring connection to an Electronic Lock:

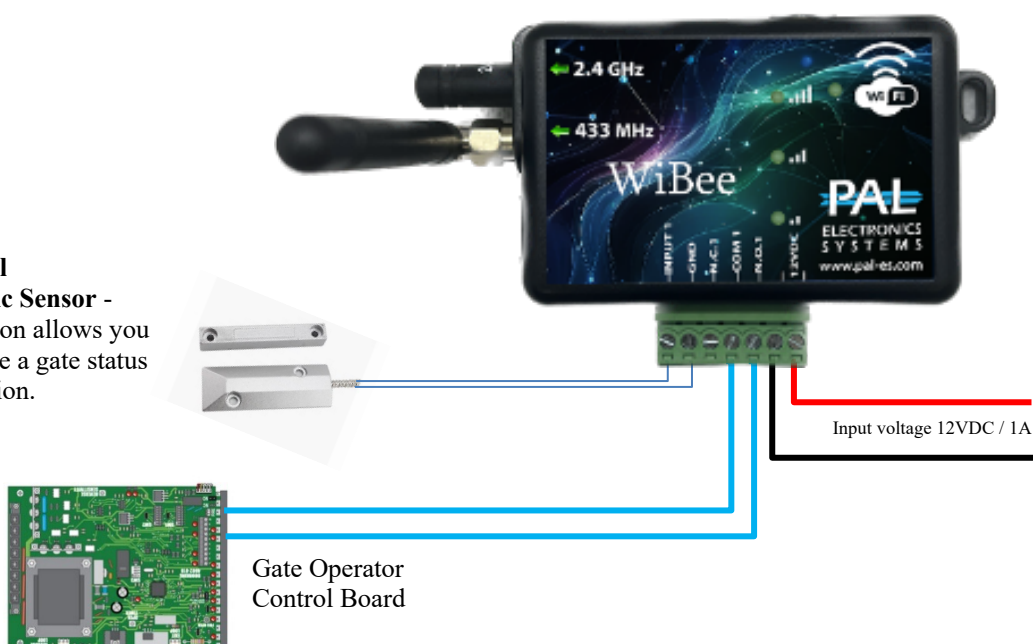
**Optional
Magnetic Sensor -**
Installation allows you to
receive a gate status
notification.



Maximum load 2A/30VDC; 0.5A/125VAC

Typical wiring connection to a Gate:

**Optional
Magnetic Sensor -**
Installation allows you
to receive a gate status
notification.

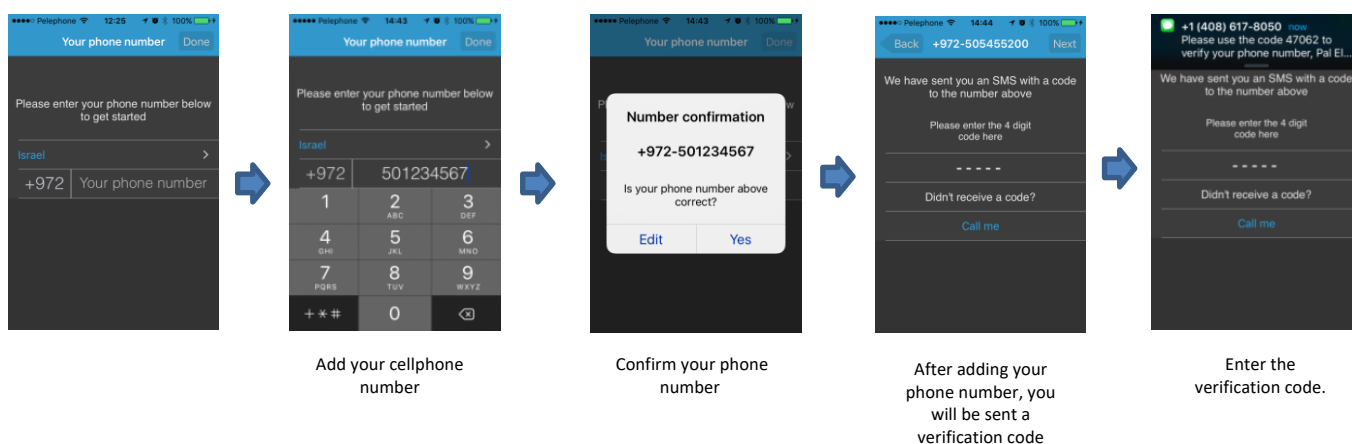


System settings using the PalGate App

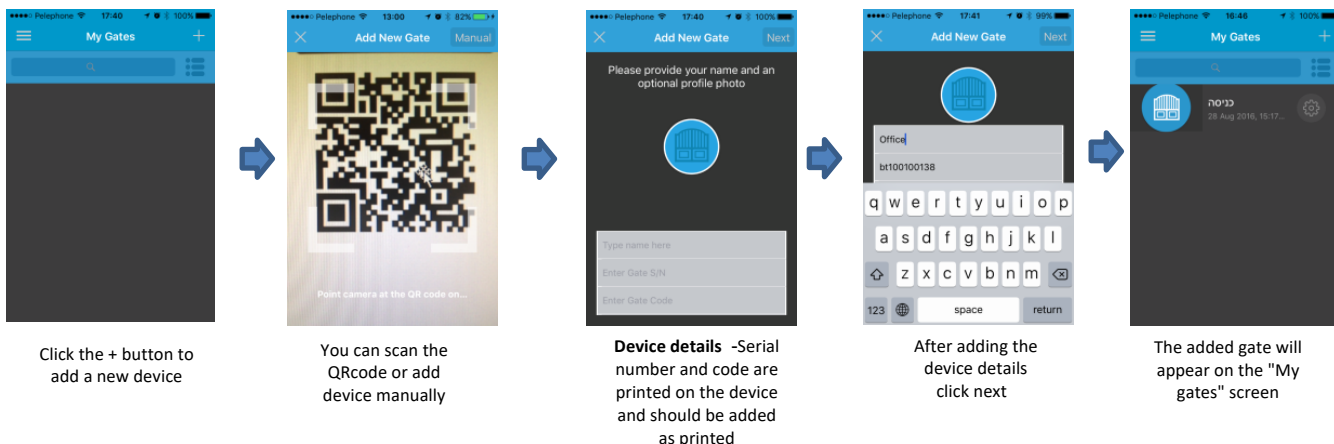
You may download our App from either the Apple App Store or from Google Play by searching for the name “PalGate”. If you prefer, you can access a direct link by scanning the QR codes below:



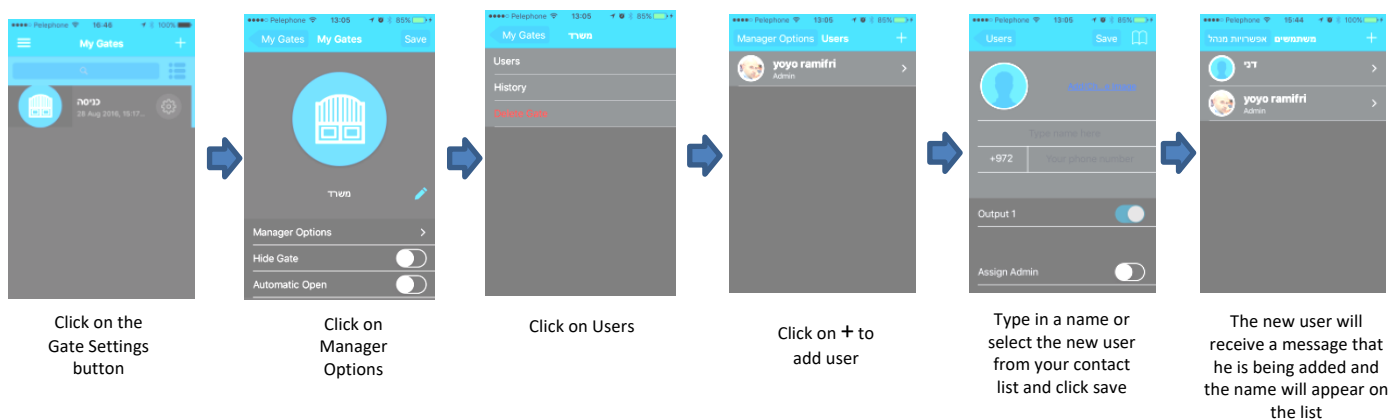
The PalGate App installation process



New device setup



Add a new user



Important Information for optimal operation:

- **Installation:** When mounting the device in a metallic housing, an external antenna shall be connected and routed to the outside
- **Power Requirements:** The unit requires a stable power source of 12Vdc/1A.
- **Environment:** Protect the unit from excessive humidity and prevent insect infiltration.
- **Network Compatibility:** IEEE 802.11b/g/n (2.4 GHz WiFi) and Bluetooth® 5 (LE).
- **Maintenance:** Any maintenance or repairs should only be conducted by authorized installers.